



**37a High Street, Lindfield, West Sussex, RH16 2HJ**

**£1,150 Per Calendar Month**

**PSP**homes

[www.psphomes.co.uk](http://www.psphomes.co.uk)

# LINDFIELD LIFE | This two-bedroom flat enjoys a convenient and established location in the popular residential area just a short walk from Lindfield High Street. Offered unfurnished and available immediately.

## The Flat...

The flat comprises of a large (16'4x15'4) living/room with double aspect windows, bedroom one with wardrobes and a second bedroom, bathroom with electric shower over bath, kitchen with electric oven and hob.

Further attributes include electric heating, secondary glazing and neutral decor

## Location...

The flat is conveniently located within a short walk of the picturesque Lindfield High Street with its selection of shops, cafés, village pubs, restaurants and churches whilst Haywards Heath town centre with its extensive range of cafés, bars, restaurants and shops is approximately two miles away.

Haywards Heaths mainline train station with its fast and regular services to London, Brighton and Gatwick Airport is approximately 1.5 miles away. By car, these surrounding areas can be easily accessed via the A23(M) which lies approximately six miles west.

## Information...

Council Tax Band: C

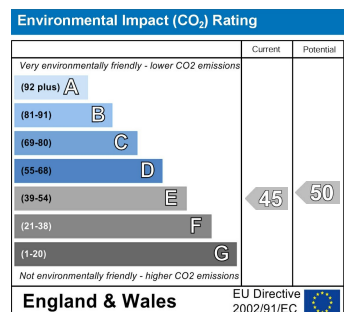
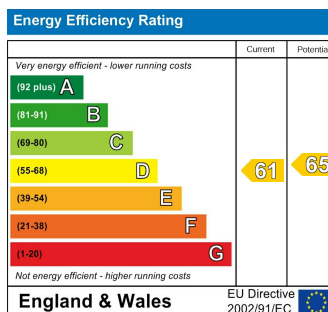
Holding deposit :- One weeks rent £265.38

Deposit - five weeks rent £1326.92

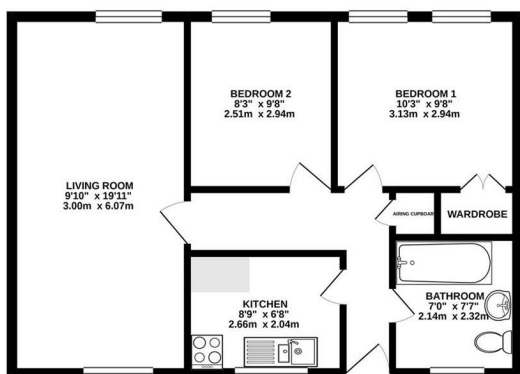
The holding deposit will be refunded against the first months' rent but can be retained if the applicant withdraws from the property, fails the reference checks due to false or misleading information or fails the Right to Rent checks.

N.B PLEASE NOTE, THIS POPERTY IS SITUATED ABOVE THE CO-OP IN LINDFIELD HIGH STREET.

Regrettably No Pets



GROUND FLOOR  
565 sq.ft. (52.5 sq.m.) approx.



TOTAL FLOOR AREA: 565 sq.ft. (52.5 sq.m.) approx.  
Plans for illustration purposes only. Intending purchasers should check measurements personally.  
Notes: all measurements correct.

# PSPhomes

VIEWING BY APPOINTMENT WITH PSP HOMES

54 Church Road, Burgess Hill, West Sussex, RH15 9AE. TELEPHONE 01444 250999  
www.psphomes.co.uk

Much care is taken in the preparation of our particulars, but we cannot guarantee that the information given is accurate. Property details are issued as a general guide only and may not form any part of an offer or contract. We recommend that intending purchasers check details personally.